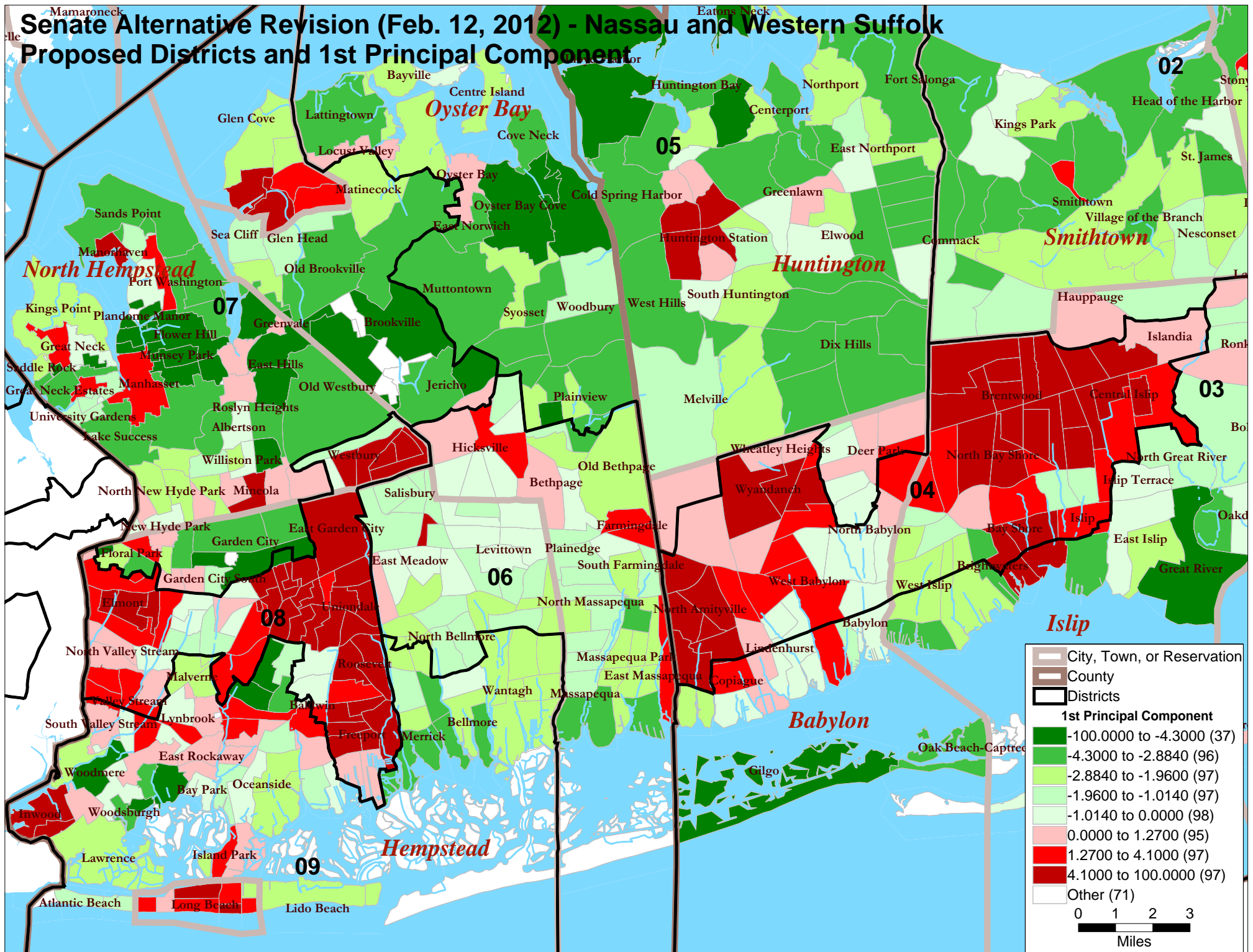


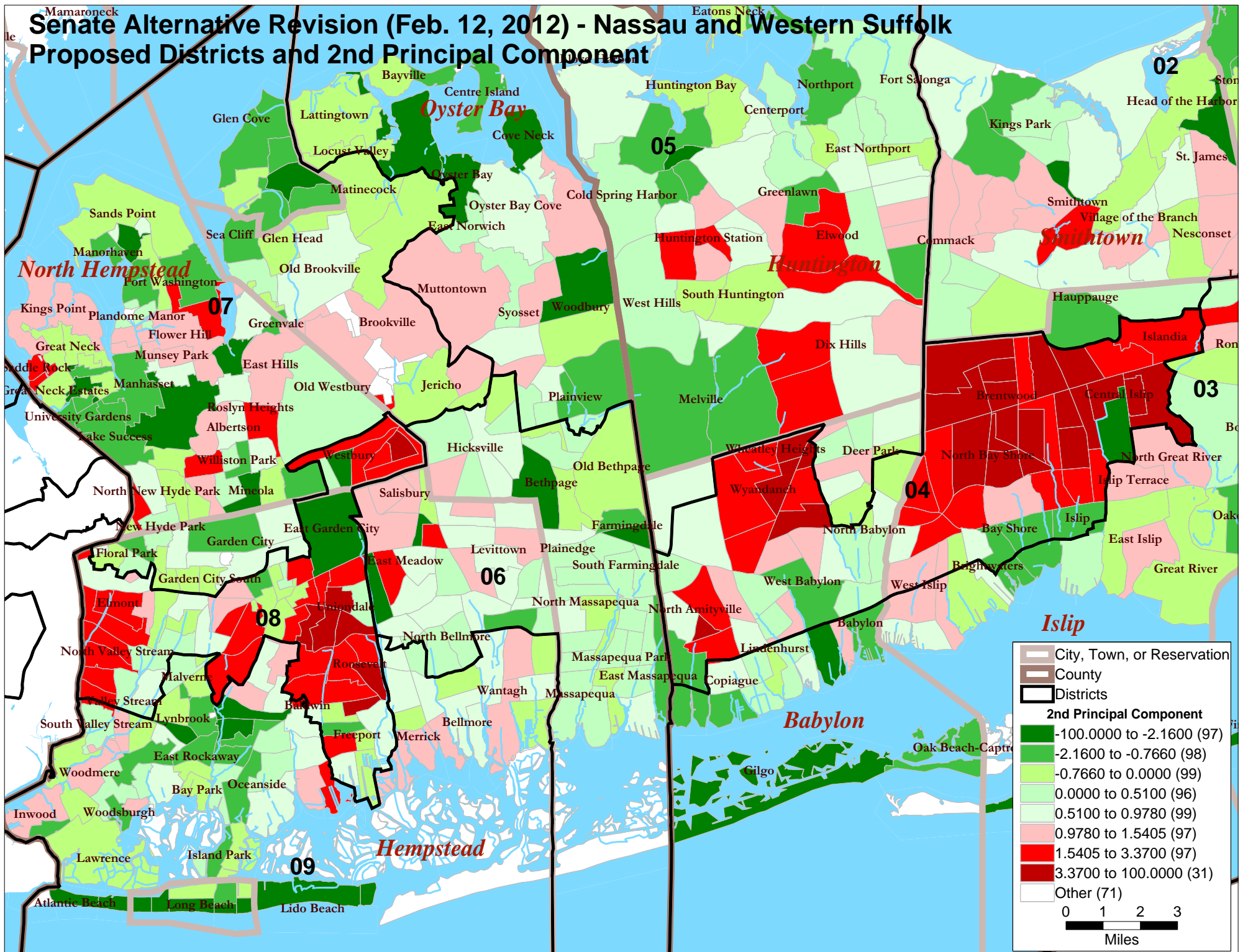
Senate Alternative Revision (Feb. 12, 2012) - Nassau and Western Suffolk

Proposed Districts and 1st Principal Component

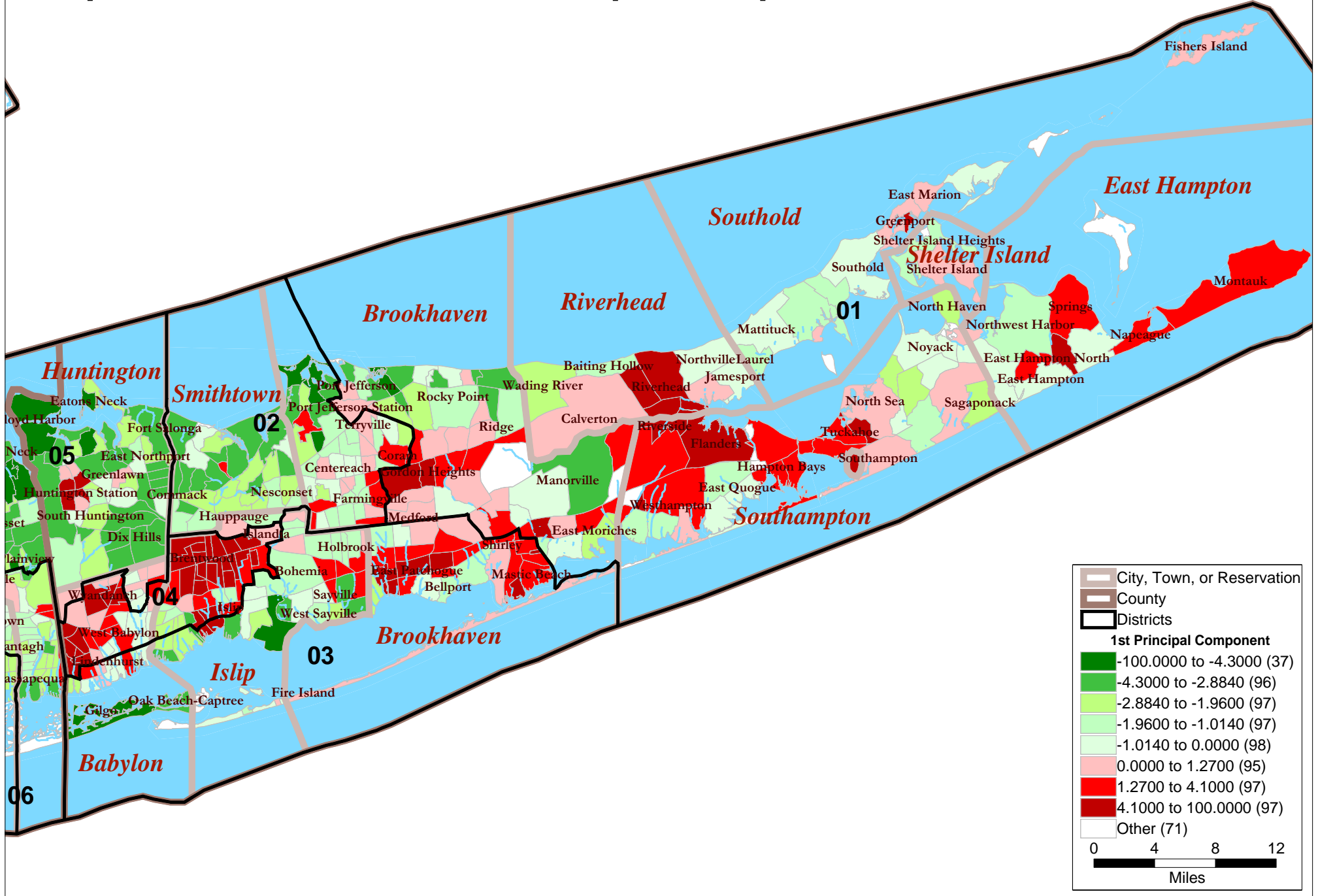


Senate Alternative Revision (Feb. 12, 2012) - Nassau and Western Suffolk

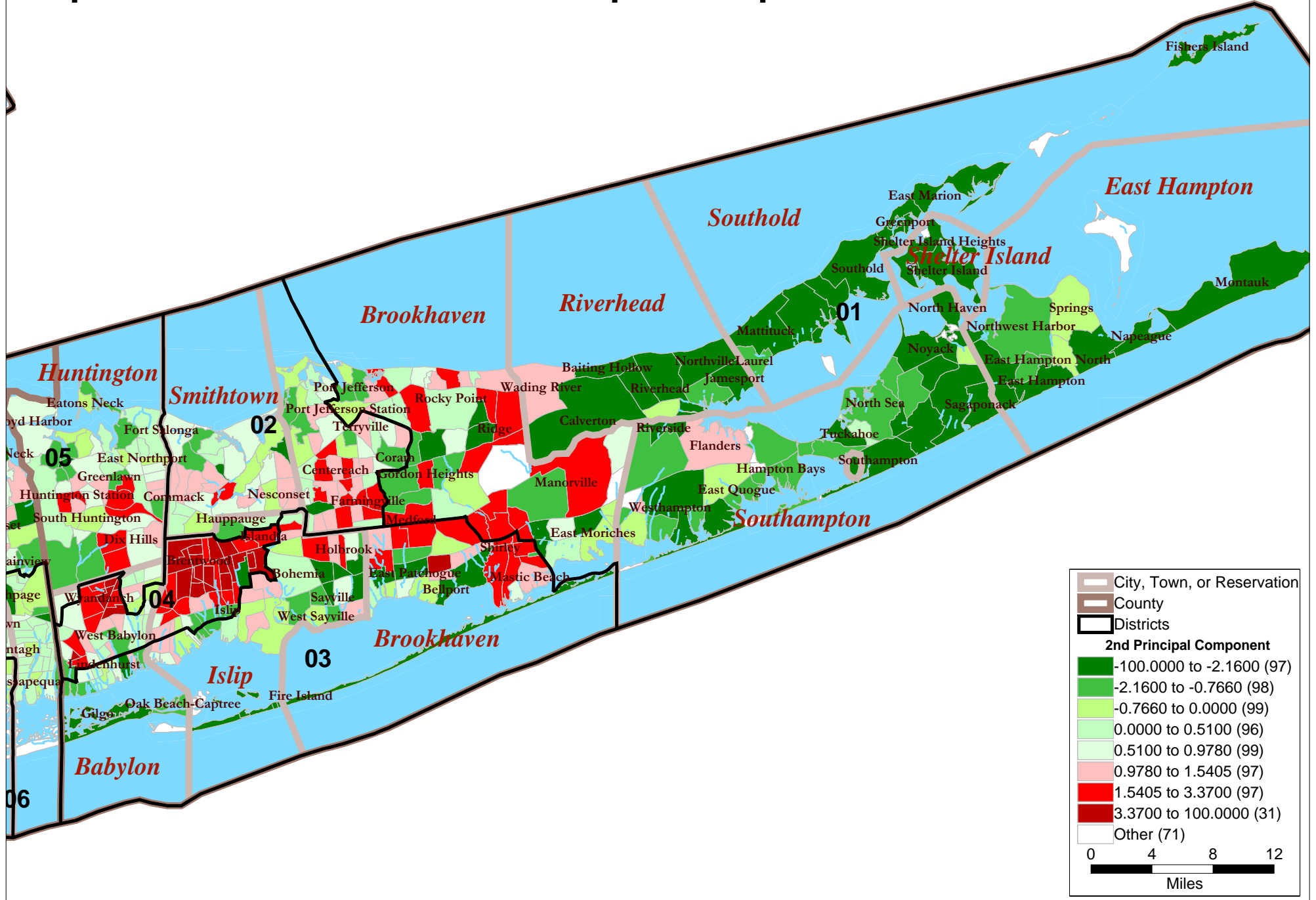
Proposed Districts and 2nd Principal Component



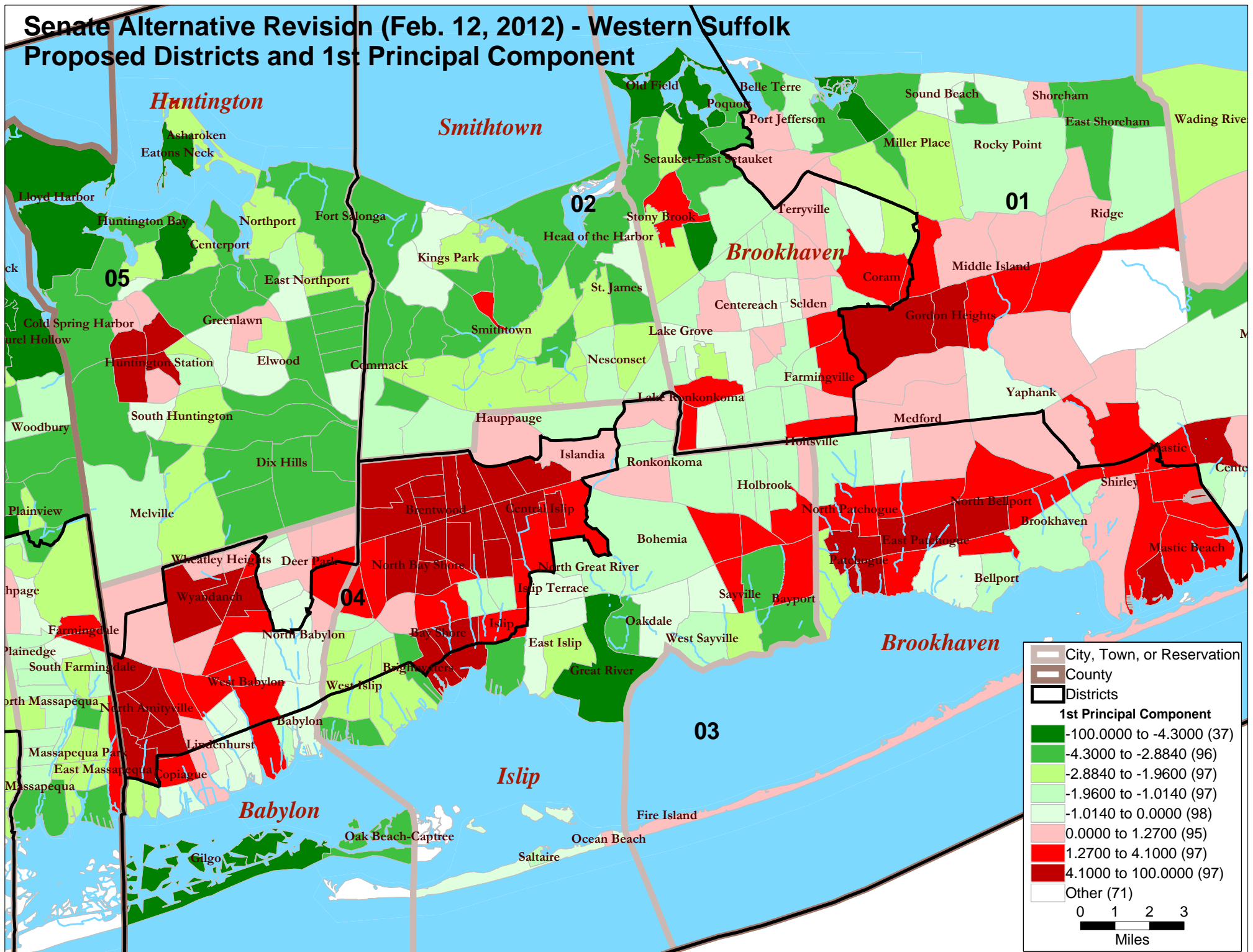
Senate Alternative Revision (Feb. 12, 2012) - Suffolk Proposed Districts and 1st Principal Component



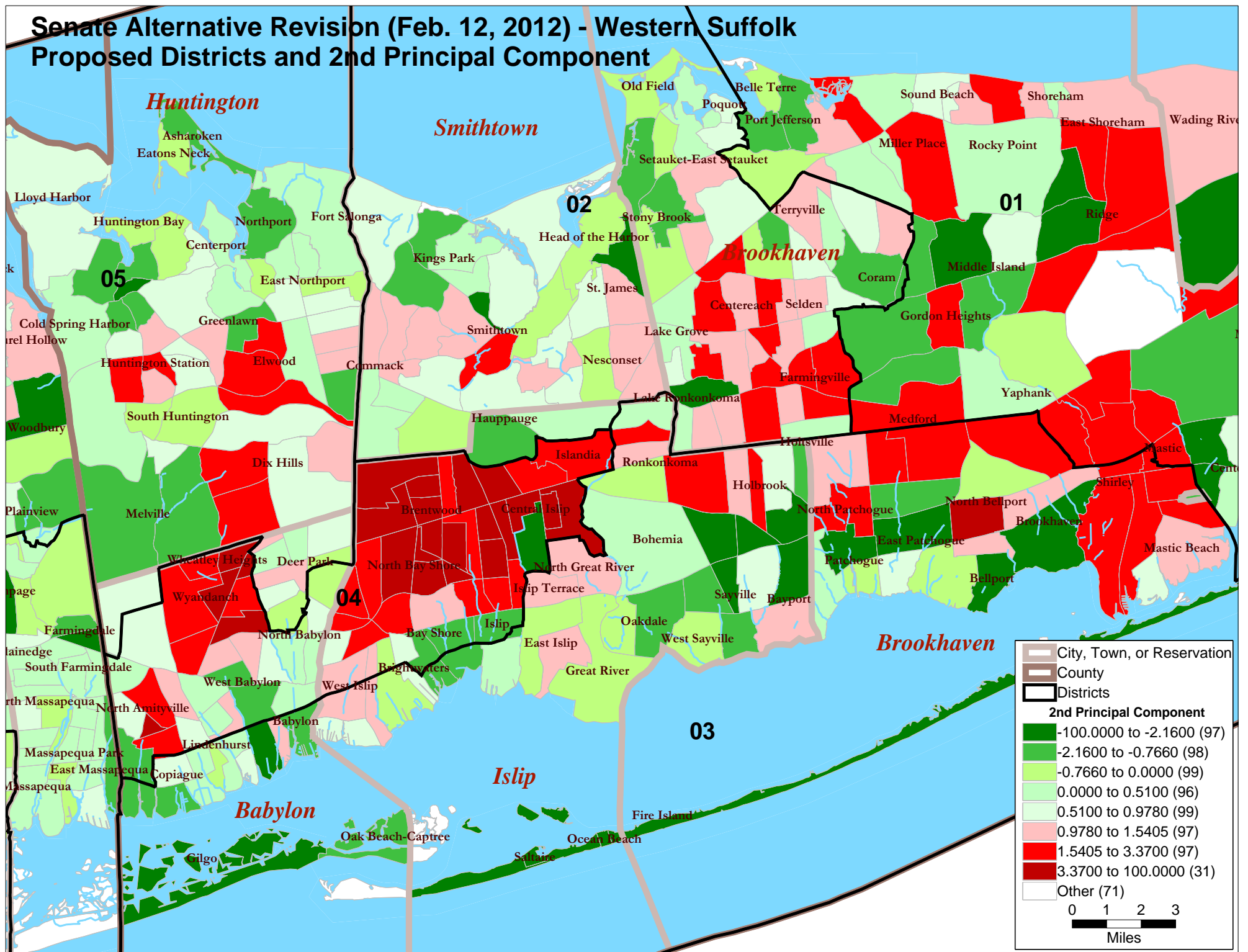
Senate Alternative Revision (Feb. 12, 2012) - Suffolk Proposed Districts and 2nd Principal Component



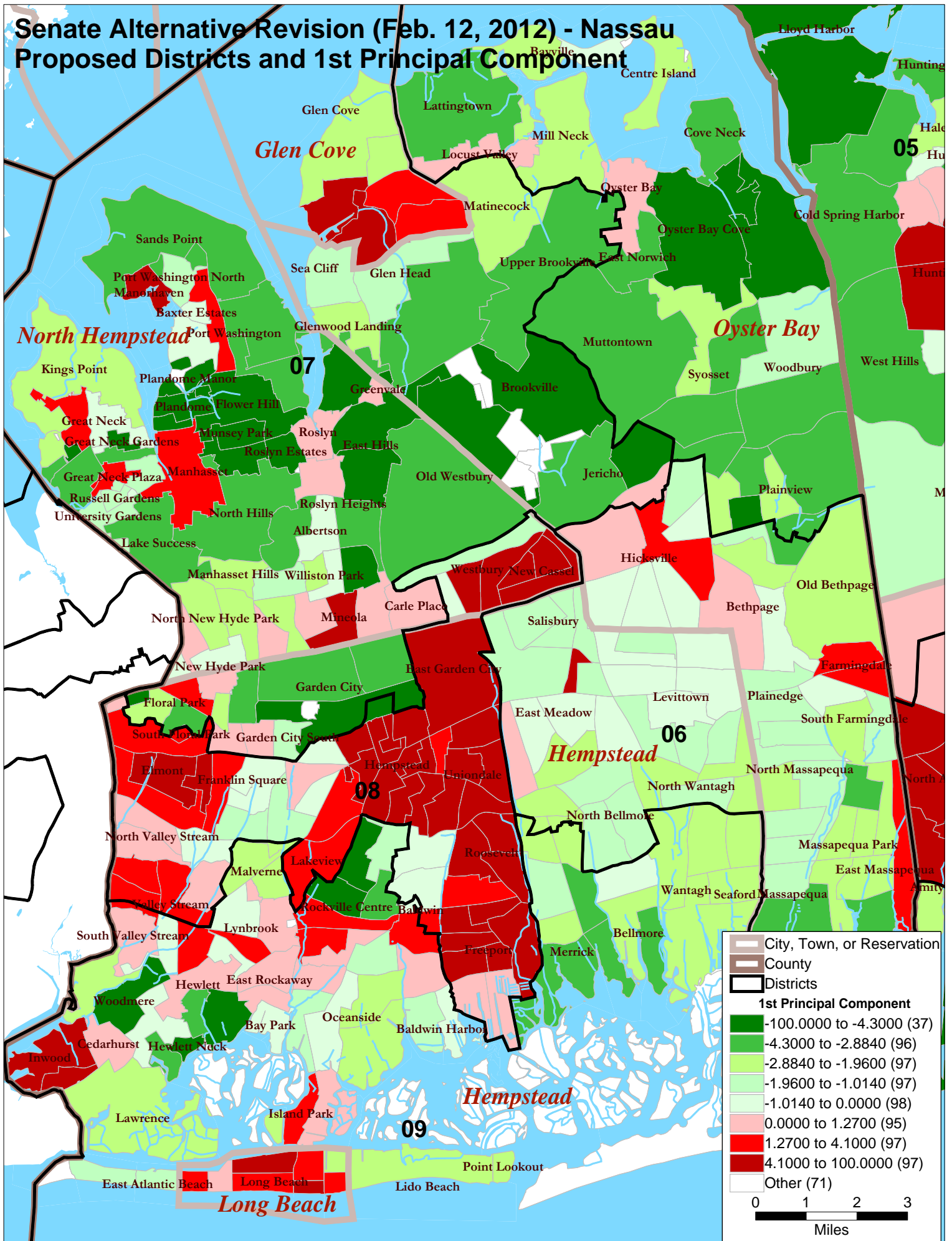
Senate Alternative Revision (Feb. 12, 2012) - Western Suffolk Proposed Districts and 1st Principal Component



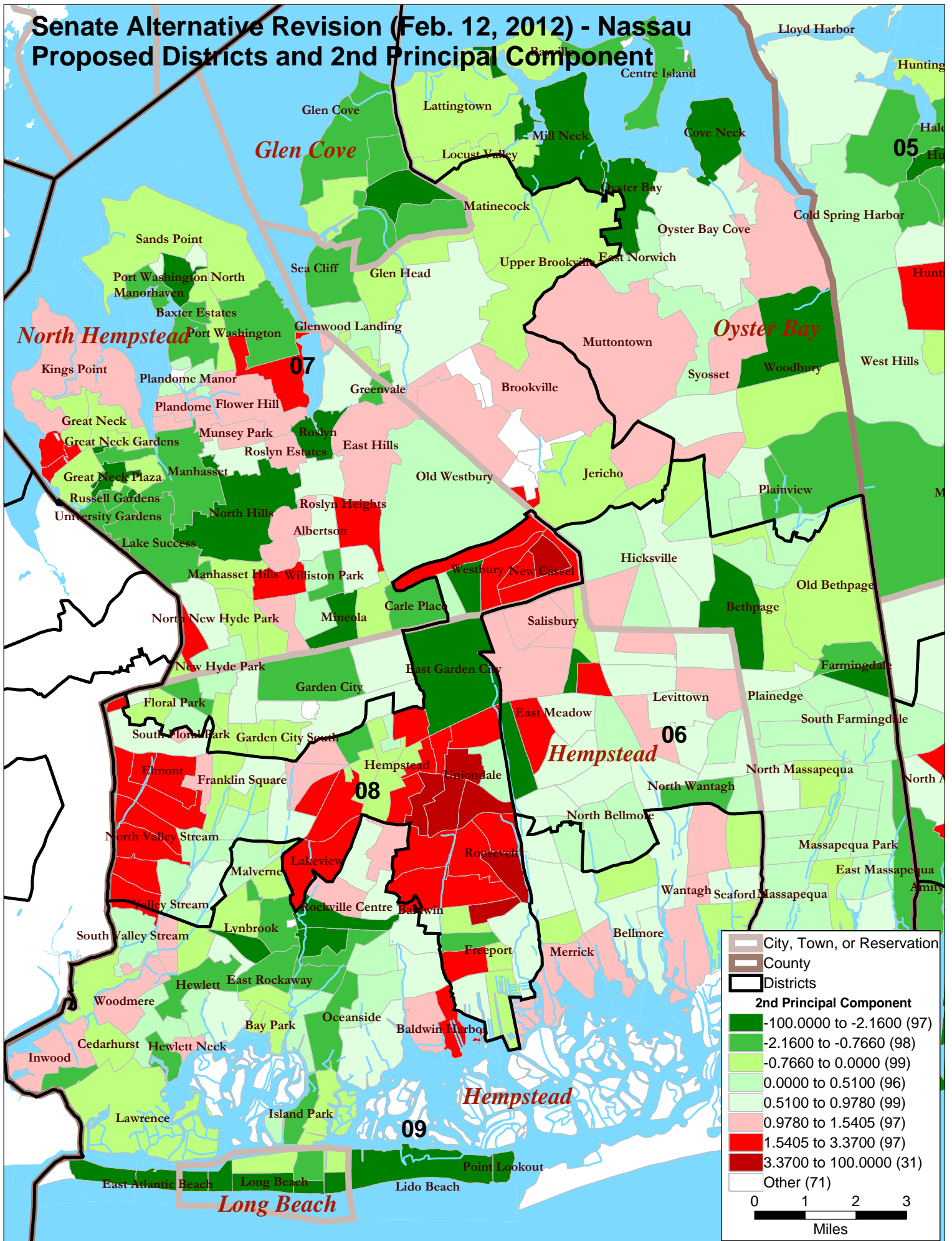
Senate Alternative Revision (Feb. 12, 2012) - Western Suffolk Proposed Districts and 2nd Principal Component



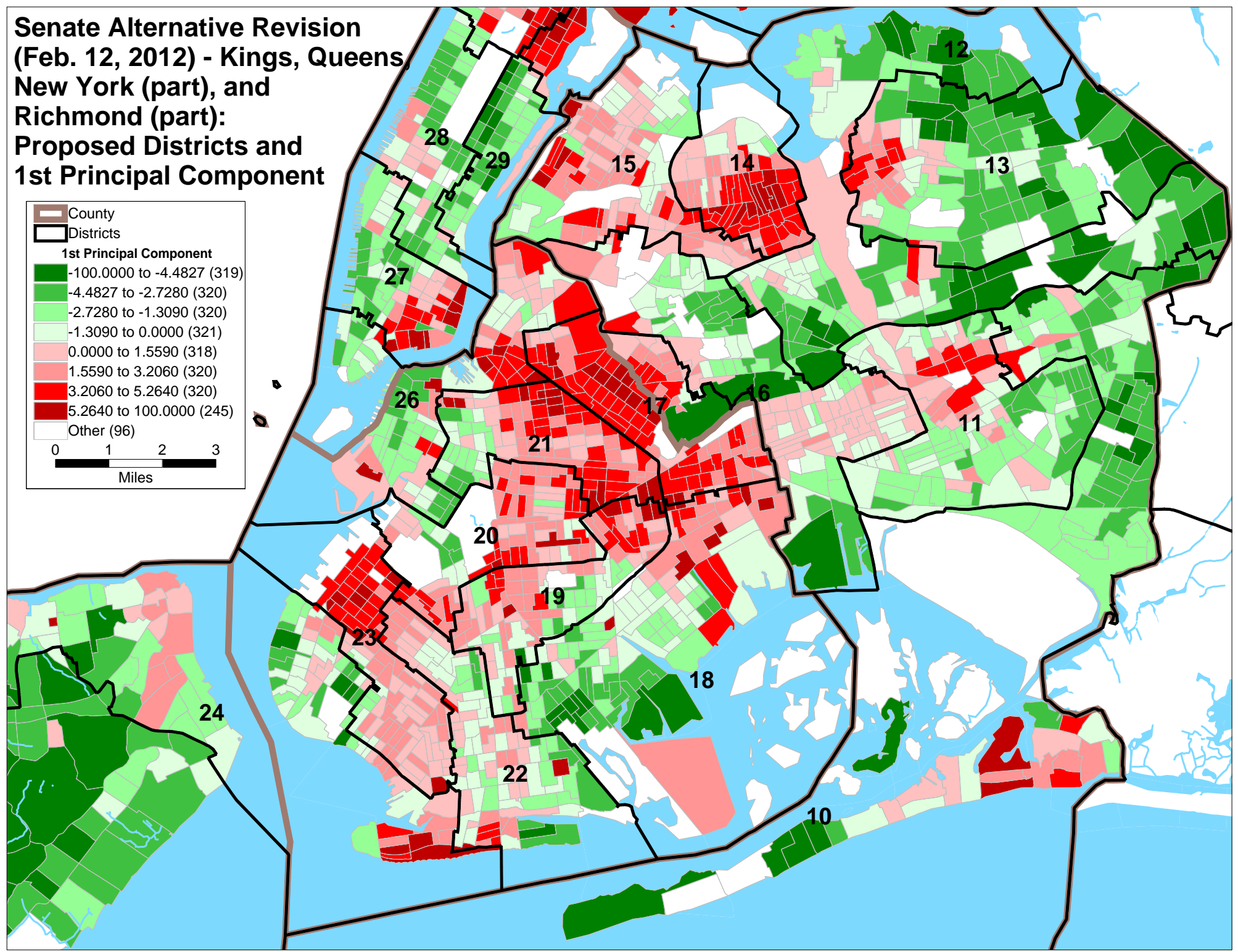
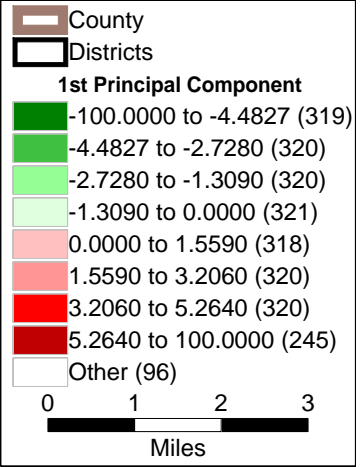
Senate Alternative Revision (Feb. 12, 2012) - Nassau Proposed Districts and 1st Principal Component



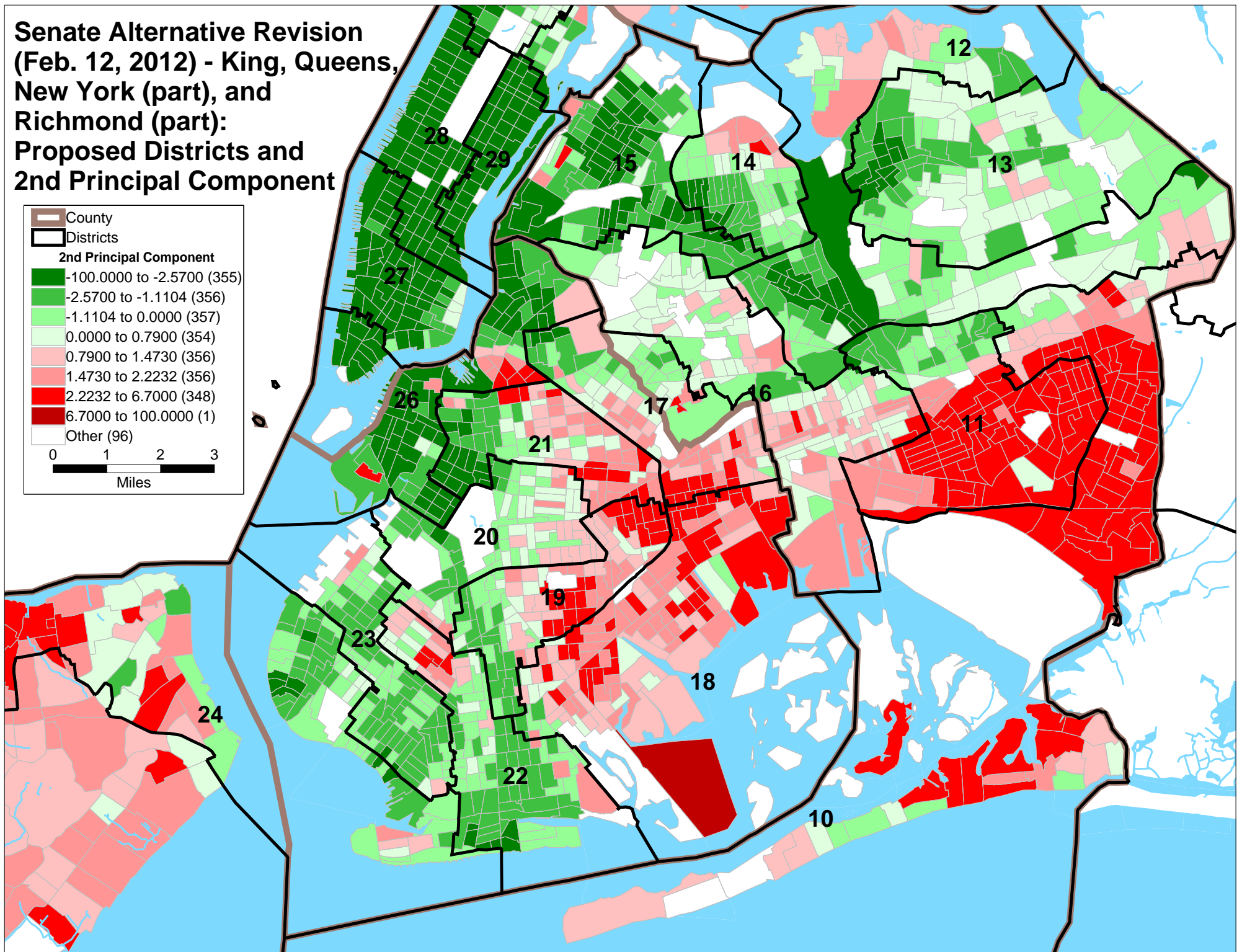
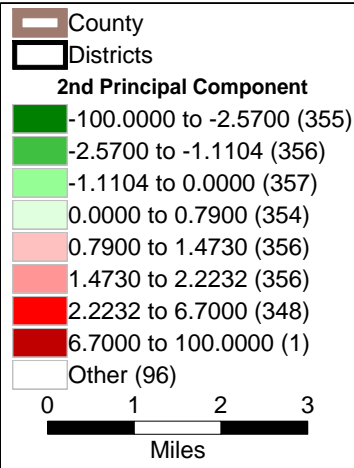
Senate Alternative Revision (Feb. 12, 2012) - Nassau Proposed Districts and 2nd Principal Component



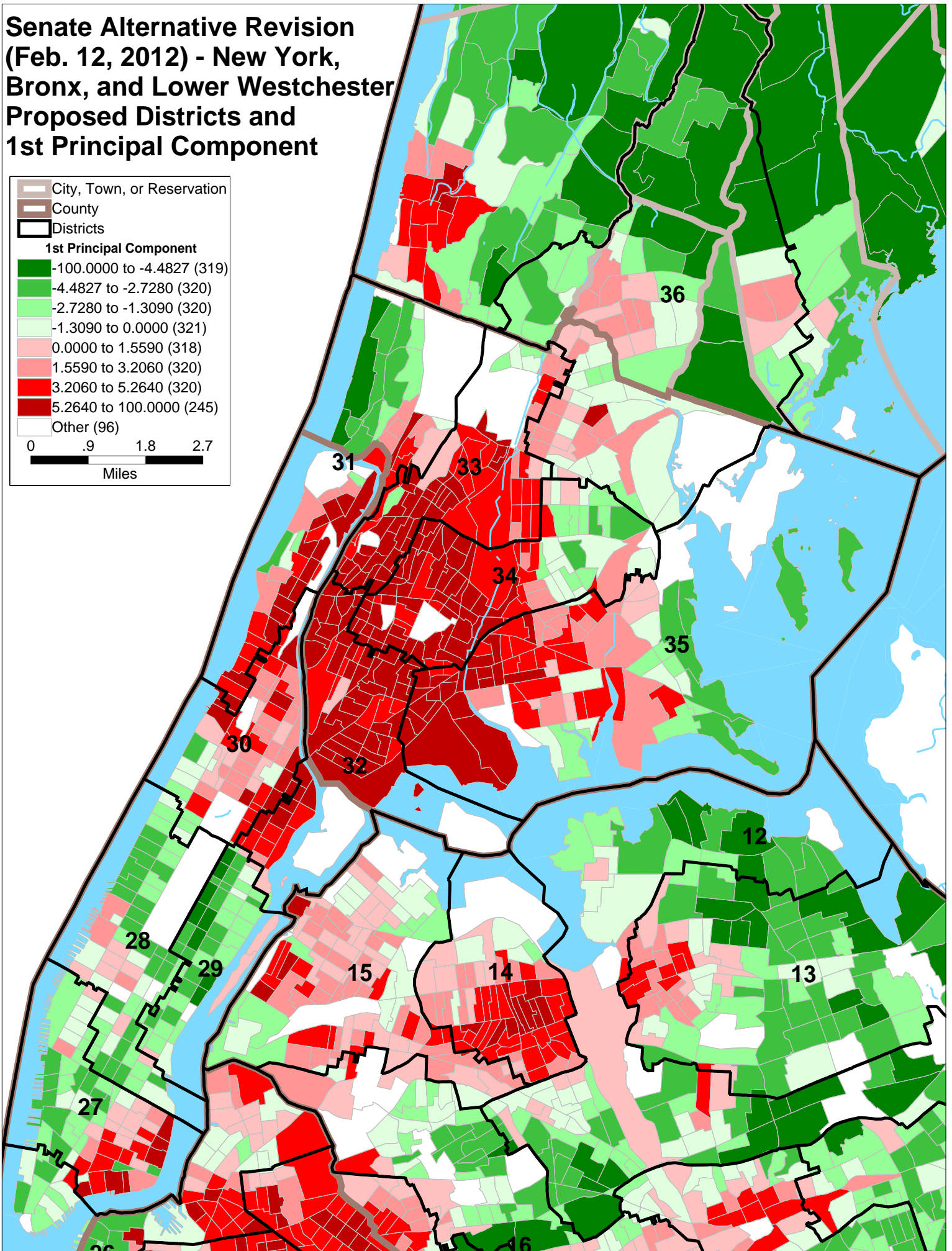
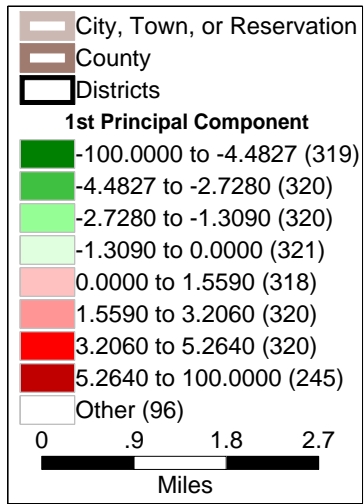
**Senate Alternative Revision
(Feb. 12, 2012) - Kings, Queens,
New York (part), and
Richmond (part):
Proposed Districts and
1st Principal Component**



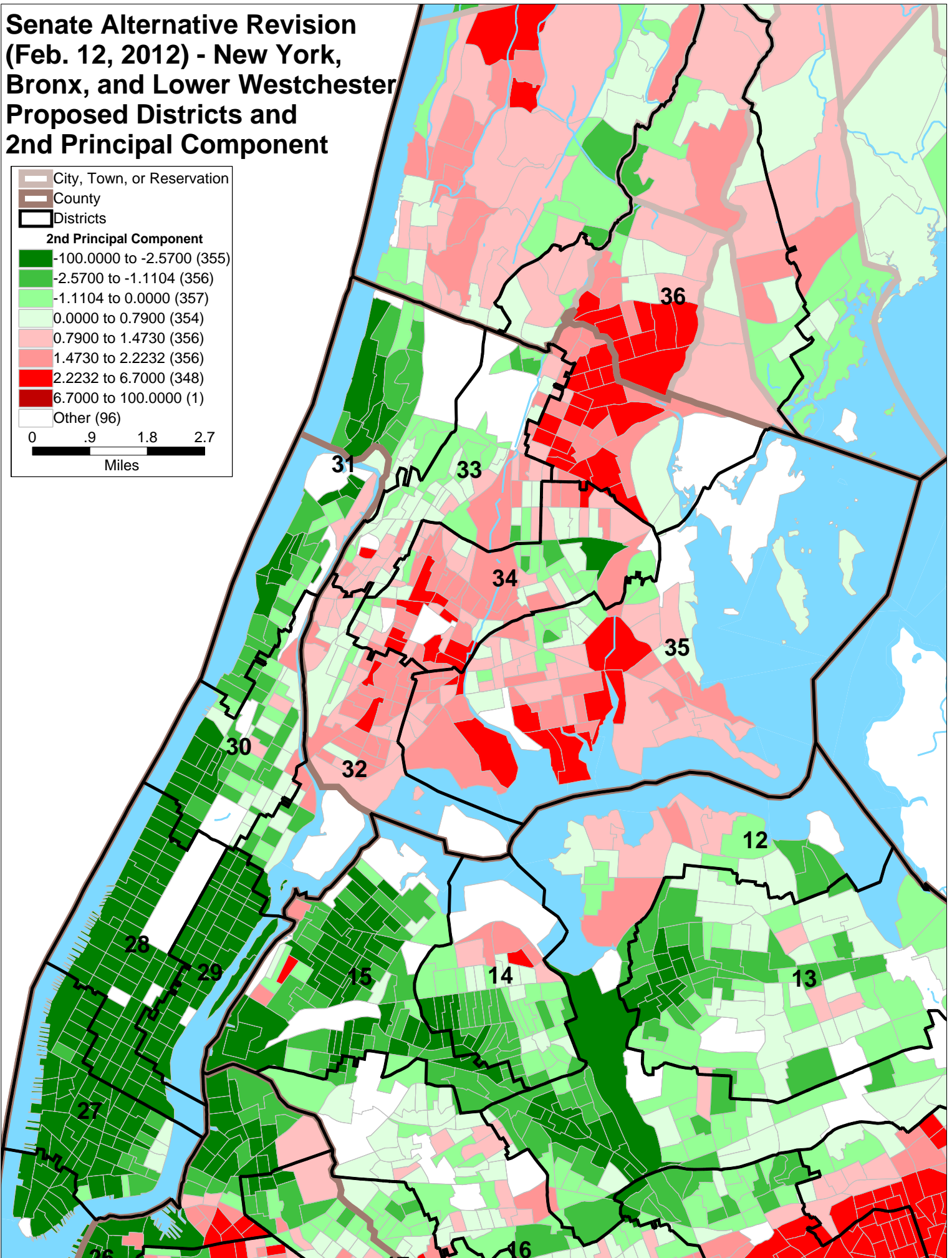
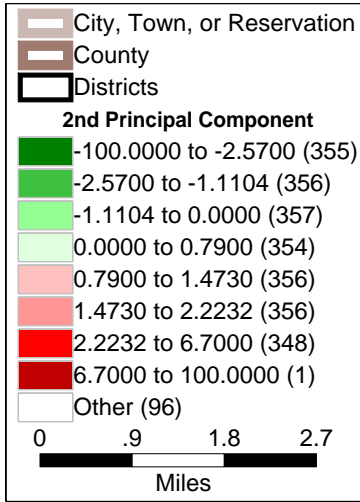
Senate Alternative Revision (Feb. 12, 2012) - King, Queens, New York (part), and Richmond (part): Proposed Districts and 2nd Principal Component



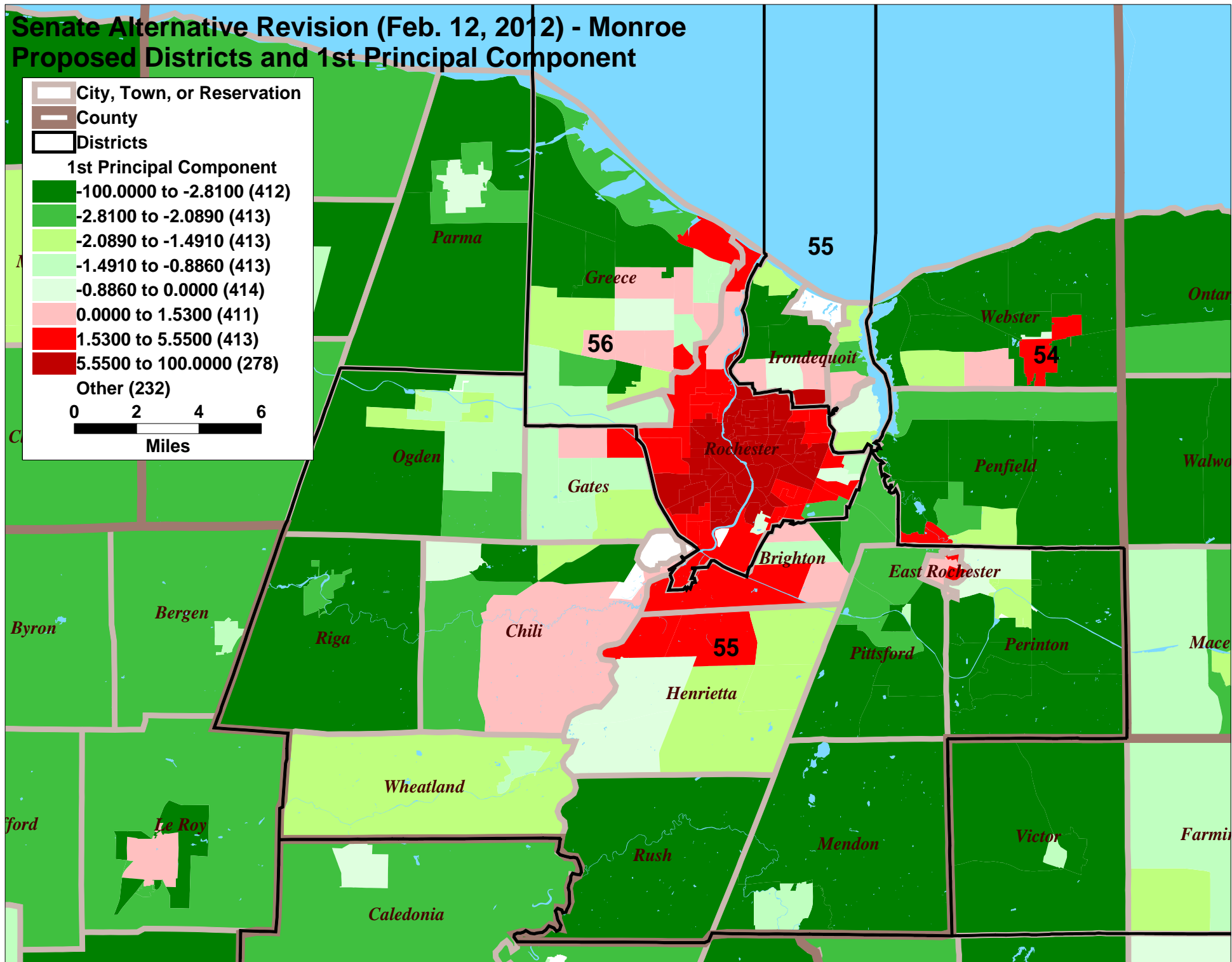
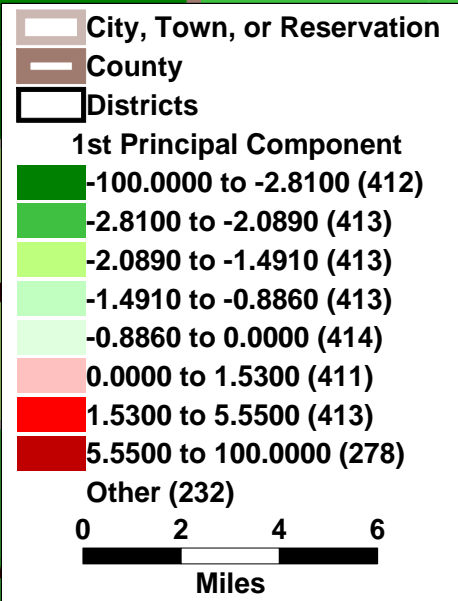
Senate Alternative Revision (Feb. 12, 2012) - New York, Bronx, and Lower Westchester Proposed Districts and 1st Principal Component



Senate Alternative Revision (Feb. 12, 2012) - New York, Bronx, and Lower Westchester Proposed Districts and 2nd Principal Component



Senate Alternative Revision (Feb. 12, 2012) - Monroe Proposed Districts and 1st Principal Component



Senate Alternative Revision (Feb. 12, 2012) - Monroe Proposed Districts and 2nd Principal Component

City, Town, or Reservation
 County
 Districts

2nd Principal Component

- 100.0000 to -3.6800 (31)
- 3.6800 to -1.9961 (448)
- 1.9961 to -1.3250 (448)
- 1.3250 to -0.6460 (448)
- 0.6460 to 0.0000 (449)
- 0.0000 to 0.8540 (447)
- 0.8540 to 2.1670 (448)
- 2.1670 to 100.0000 (448)

Other (232)

0 2 4 6
Miles

